

# **EXHIBIT G**

## **IMPLEMENTATION POLICY**

## IMPLEMENTATION POLICY FOR THE DODGE COUNTY ZONING ORDINANCE

**Purpose:** To consistently apply definitions and procedures that clarify the intent of the ordinance.

**Policy #1:** Dodge County defines the word "home" as used in Chapter 11, Section 11.6 (REZONING TO RURAL RESIDENTIAL), as *"any part of a buildable lot currently zoned as rural residential, with or without a home on the parcel, and any part of a dwelling located in the Agricultural District."*

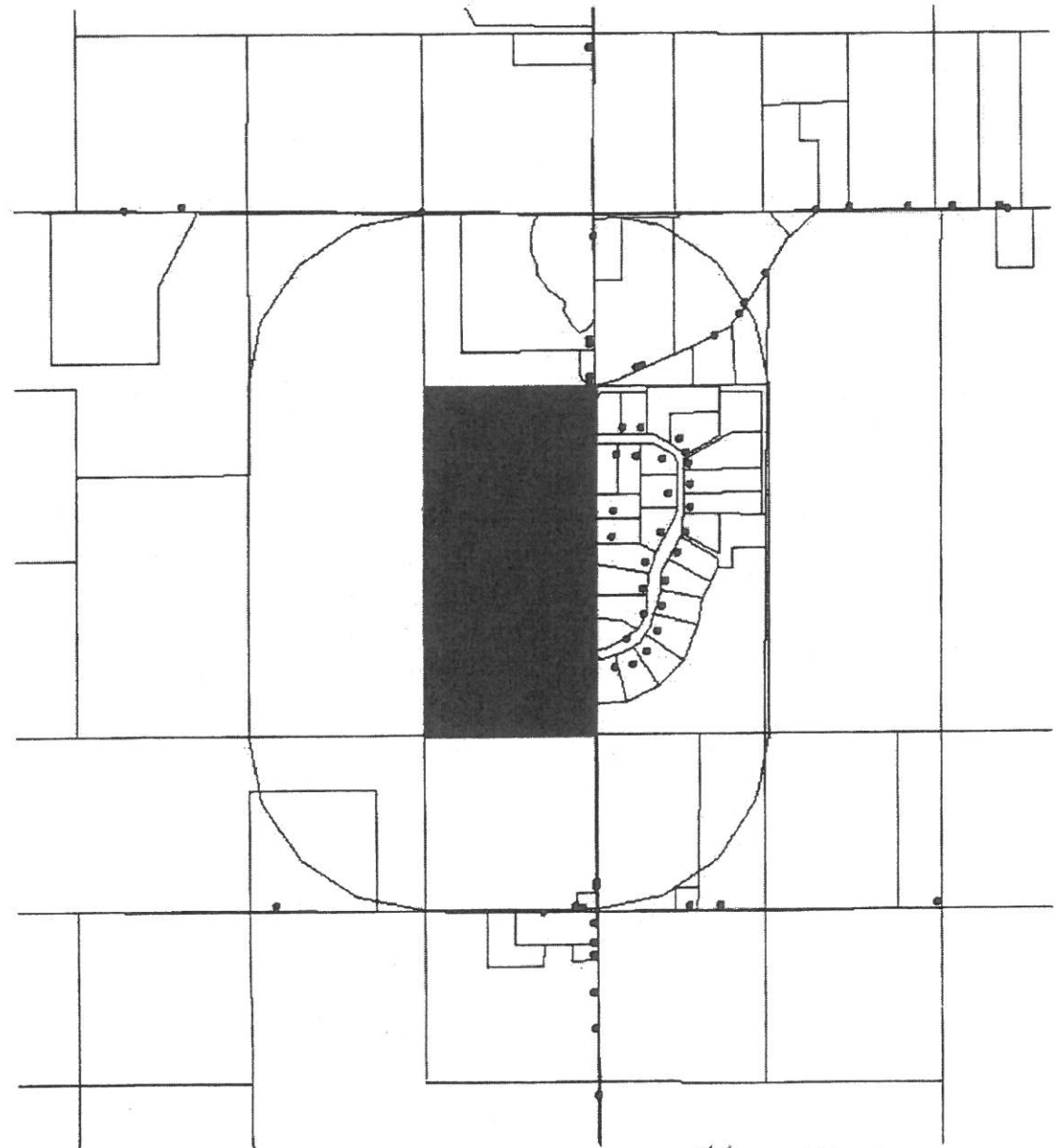
This policy is consistent with descriptions and illustrations used at public meetings and public hearings held for the Zoning Ordinance in 2002.

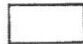


The Dodge County Board of Commissioners approved this Policy #1 on January 7<sup>th</sup>, 2003.

**Please see the following pages for illustrations/examples.**

EXHIBIT G

Vernon Twp.

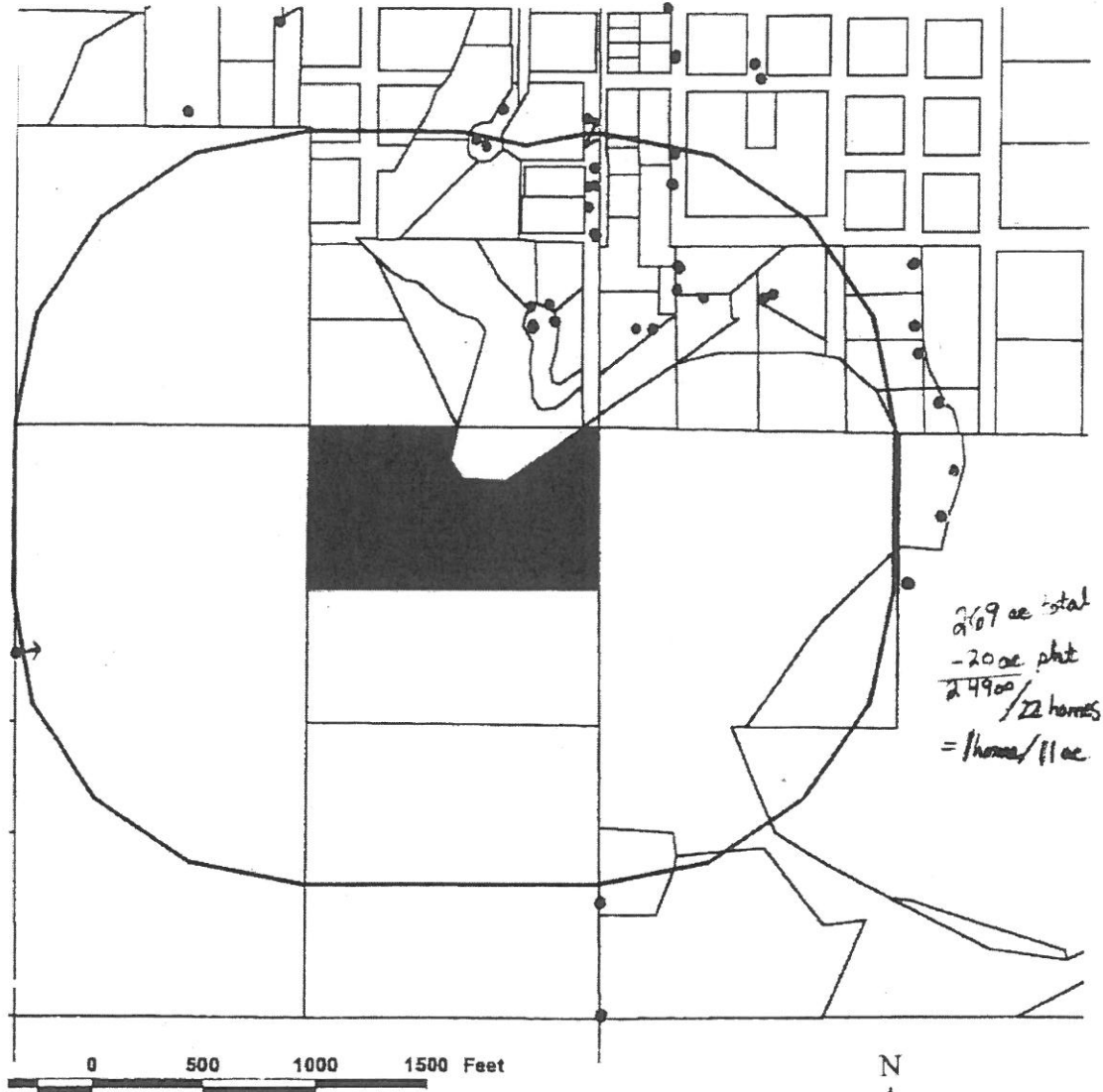


-  1320' buffer.shp
-  Names\_addresses.shp
-  80 acre .shp

446 ACRES  
- 80 ACRE PLAT  
-----  
366 ACRES  
= 43 HOMES  
= 1 HOME/9 ACRE



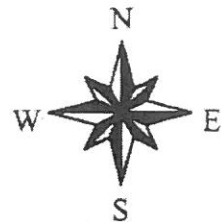
# Wasioja Twp



- Homes
- 1320' buffer
  - 20 ac. parcel
  - Wasioja.shp

Buffer :

Acres
269.054



\*\*at 40 ac it was = 1/14 ac (at a 37 ac plat)